

Norev 3 inch/1:64

Posted by jclevering - 20 Feb 2012 15:36

Norev started making 1:64ish cars I believe in the seventees and ended in the eighties. They used some Schuco 1:66 casts as well, possibly after Schuco got into financial trouble, also in the seventees? Afterwards they also used some casts from Chinese manufacturers.

Around 2000 or so, Norev started making cars in the same kind of scale, slightly bigger, for manufacturers, the first being Renault. As far as I can make out, one of the first casts was a Renault Kangoo. Since then, they made cars for the major French car manufacturers, later followed by Mercedes-Benz (but this deal seems to have ended already), Mini, Volkswagen, Opel and Lancia, though they have made cars of many other car manufacturers too.

As their scope has grown so big, might it be a good idea to discuss these here? I believe the webmaster of www.mjrttrv.nl is one of the bigger collectors of this brand and has published some books about the subject and he might be able to help?

=====

Re: Norev 3 inch/1:64

Posted by RoutemasterNL - 28 Oct 2013 15:02

great find. Does the Dutch police still use Porsches? Doesn't look familiar to me

=====

Re: Norev 3 inch/1:64

Posted by blackstone - 28 Oct 2013 15:24

No not anymore , I think it is Belgian Police livery ; I do not think they use Porsche's

I have never seen one

=====

Re: Norev 3 inch/1:64

Posted by jclevering - 29 Oct 2013 12:22

RoutemasterNL wrote:

great find. Does the Dutch police still use Porsches? Doesn't look familiar to me

This is the Belgian police. The Dutch police used to have Porsches up until the early 1990's. Nowadays they have Volkswagen and Volvo.

=====

Re: Norev 3 inch/1:64

Posted by jclevering - 29 Oct 2013 12:25

blackstone wrote:

No not anymore , I think it is Belgian Police livery ; I do not think they use Porsche's

I have never seen one

Correct. You might have seen this one?



This is a Peugeot 308 (2011 model) from the local police. The Porsche has the livery of the federal

=====

Re: Norev 3 inch/1:64

Posted by jclevering - 18 Nov 2013 12:57



Renault Alpine A110-50

=====
Re: Norev 3 inch/1:64

Posted by RoutemasterNL - 18 Nov 2013 13:53

THat is a super car. It doesn't have an A-pillar does it?

=====

Re: Norev 3 inch/1:64

Posted by jclevering - 19 Nov 2013 05:02

It kind of does the same trick as the Mini. I believe the real car has an A= Pillar, but it is kind of hidden.

=====

Re: Norev 3 inch/1:64

Posted by Majorettelover - 03 Jan 2014 22:41

Norev is kinda rare here in Brazil.

Well, if you exclude hot wheels and Matchbox, you won't find much around (new cars).

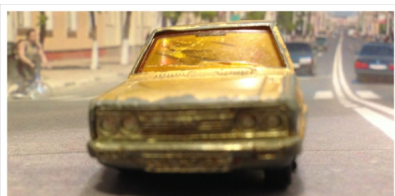
It's great to see those new Norevs.

I don't collect them, and I only have 1. It's pretty worn. haha.

It's from the 70's, as far as I know.

I've googled looking for info about this car and didn't find much.

What can you guys say, is it rare? cheap? trash? haha..



Re: Norev 3 inch/1:64
Posted by Nobleco - 03 Jan 2014 23:16

Not into the Norev line so don't know much about them at all.

=====

Re: Norev 3 inch/1:64

Posted by jclevering - 06 Jan 2014 04:38

In Europe it is not particularly rare and they are normally not collected so much. Yours seem to have a common issue for Norevs of this age: Saging wheels. Paint chips and a cracked window would make it worth nothing in most European countries. I can see how it i might be rare in Brazil and worth more over there. Didn't REI make these as well?

=====

Re: Norev 3 inch/1:64

Posted by jclevering - 06 Jan 2014 04:41

It seems Norev has gone slightly smaller in scale, recently.



This Citroen C4 Picasso of the 2nd generation is smaller then it's predecessor. This make the scale closer to 1:64 then it used to be in the past. They've become less robust as well.

=====

Re: Norev 3 inch/1:64

Posted by jclevering - 16 Jan 2014 13:51





=====

Re: Norev 3 inch/1:64

Posted by blackstone - 16 Jan 2014 14:01

I like the race transporter , new ?

=====

Re: Norev 3 inch/1:64

Posted by jclevering - 16 Jan 2014 14:17

yes!

=====
Re: Norev 3 inch/1:64

Posted by Nobleco - 16 Jan 2014 19:52

Jan, I would love to see a few more shots of the Mercedes Race Transporter. At 1:64 scale it seems to have great details.

=====